



# CLIMATE ACTION PLAN 2.0 UPDATE - JUNE 17, 2019

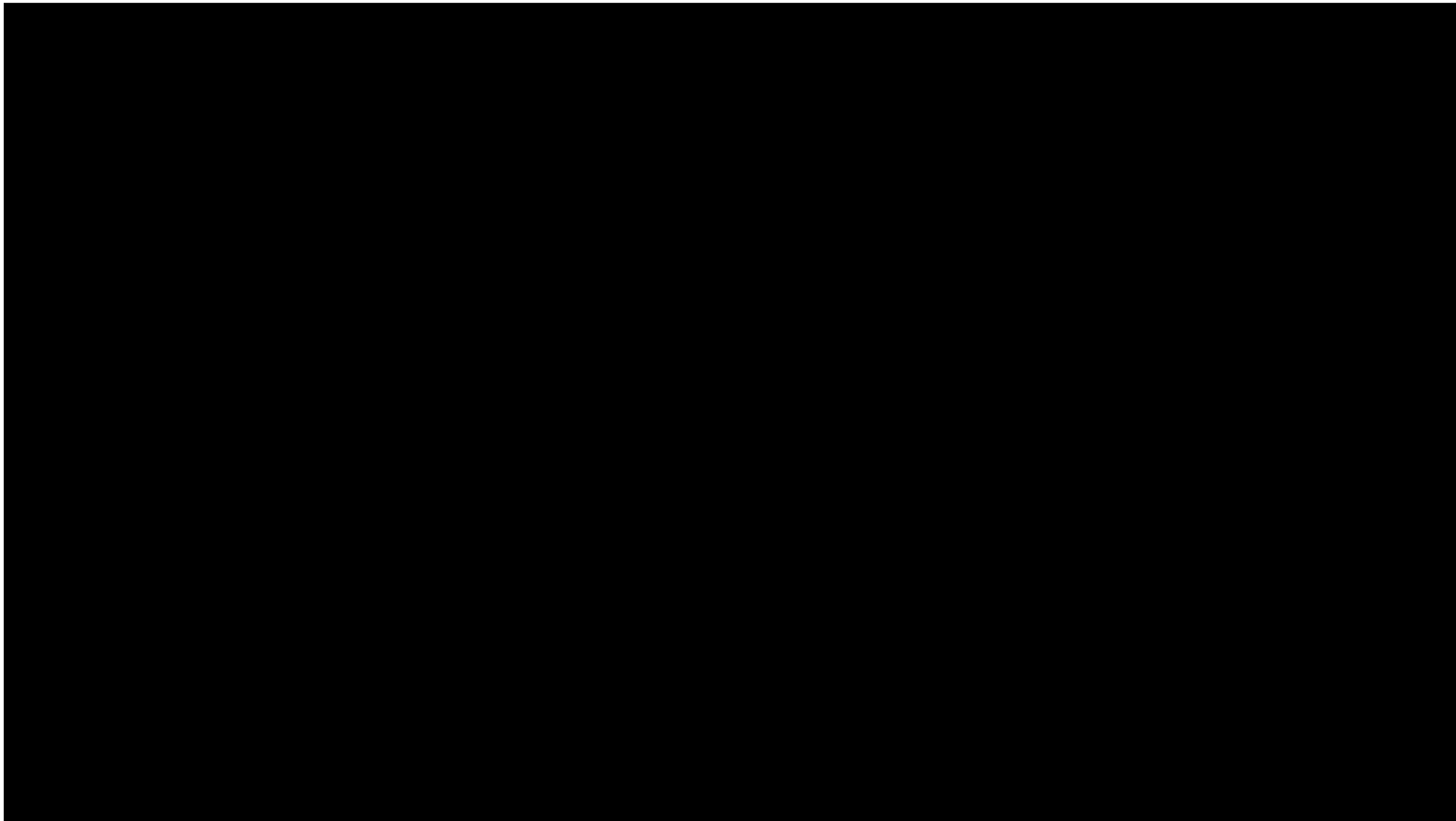
City Manager's Office

# Agenda

---

- Communications and Outreach
- CAP2.0 Equation
  - ▣ City of Eugene Actions
- CAP2.0 Gap Strategies





# Communications and Outreach

Home > Departments > Central Services > City Manager's Office > Sustainability in Eugene

## Sustainability in Eugene



### Community Climate Recovery Ordinance Goals

• • •

Eugene, Oregon enjoys a long history of innovation, vision and commitment to sustainability. We take a comprehensive approach that places equal importance on advancing social equity, economic prosperity and environmental health.

### Climate Action Plan 2.0

### Climate Recovery Ordinance Goals

The Climate Recovery Ordinance includes four ambitious goals - two community goals and two City operations goals.



#### Community Goals

- Reduce community fossil fuel use by 50% of 2010 levels by 2030
- Reduce total community greenhouse gas emissions to an amount that is no more than the city of Eugene's average share of a global atmospheric greenhouse gas level of 350 ppm by 2100, which was estimated in 2016 to require an annual average emission reduction level of 7.6%



<https://www.eugene-or.gov/climate>

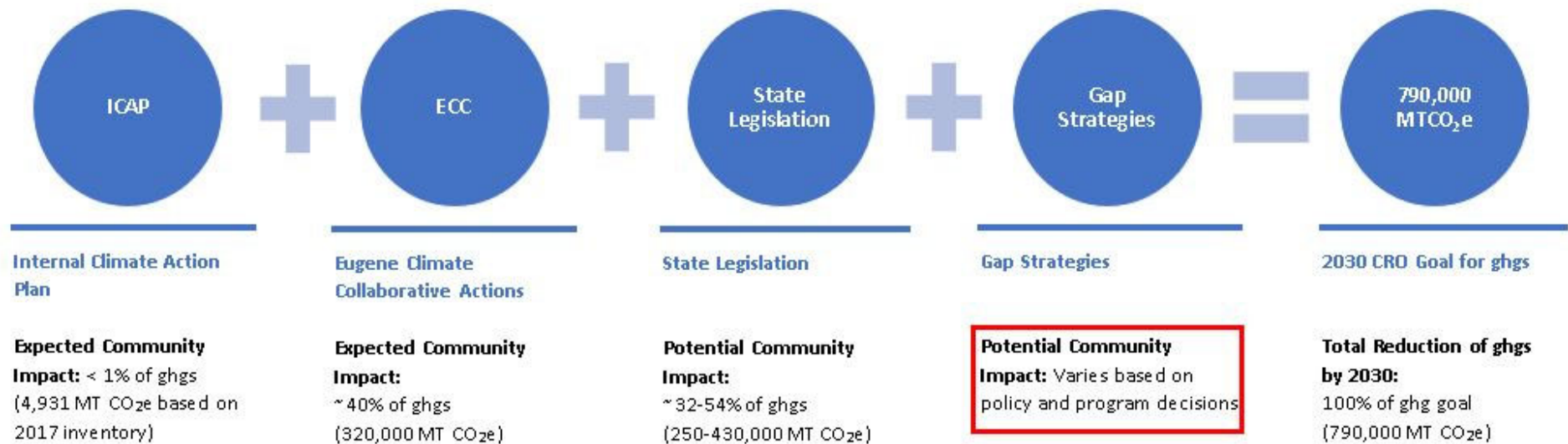
## Communications

- Website Update
- New Climate Connections Blog
- Social Media Posts
- Video – Planning for Tomorrow's Climate

## Outreach

- Making It Happen!
- Party in the Parks
- High Schools
- Equity Panel Organizations

# CAP2.0 Equation



# CAP2.0 Equation: ICAP



# CAP2.0 Equation: ECC Actions

## EUGENE CLIMATE COLLABORATIVE LARGE LEVER SHAREHOLDERS

By starting with the engagement of systems level actors, we are laying the foundation to make it easier for everyone – individuals, households, businesses, and other organizations – to take actions that support the CRO goals.



ECC partners are defined as organizations who have significant oversight and impact on community-wide fossil fuel use and greenhouse gas emissions or have the ability to affect or alter systems that will enable the community to adapt and prepare for climate change.





# City of Eugene's ECC Actions: High Impact Practices

- ▣ Transportation System Plan
- ▣ Food waste management
- ▣ Internal Climate Action Plan
- ▣ Asphalt and concrete reuse
- ▣ Increasing urban tree canopy





# Transportation System Plan



- Moving Ahead
- Central Eugene in Motion
- Amazon Active Transportation Corridor
- 13<sup>th</sup> Avenue Bikeway
- Transit Tomorrow



# City of Eugene's ECC Actions: **Sample of Triple Bottom Line Practices**



- ❑ Waste Prevention Programs, like the Water Station Project
- ❑ Sustainable Purchasing Policy
- ❑ Support for Community Programs like Safe Routes to School and PeaceHealth Rides
- ❑ Natural Hazards Mitigation Plan
- ❑ Parks and Open Space Planning around water conservation and drought management, including Salmon Safe Certification



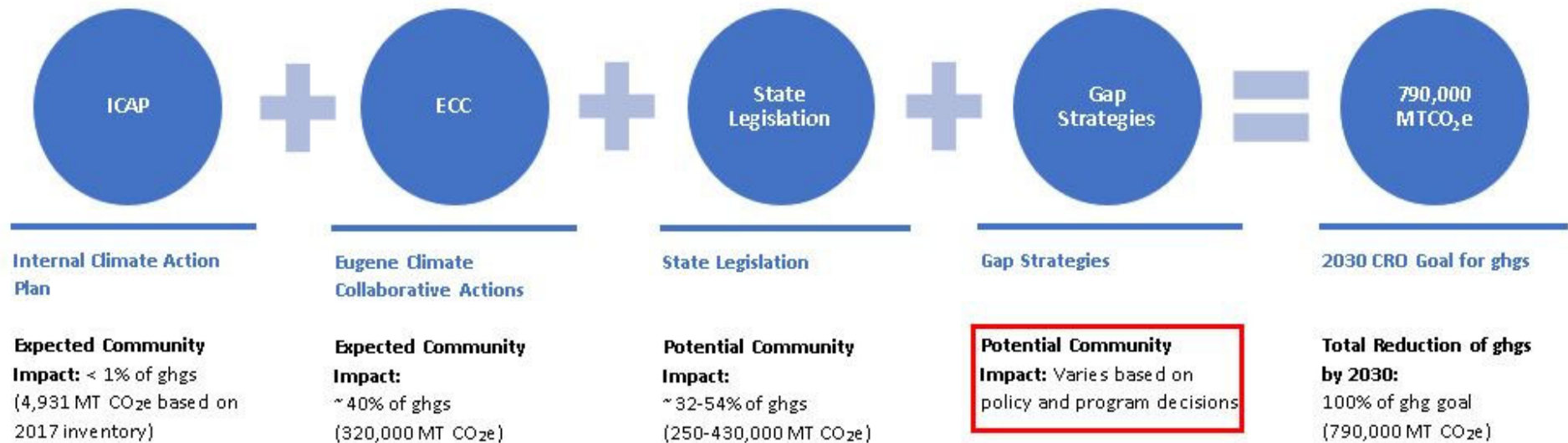
# CAP2.0 Equation: State Legislation



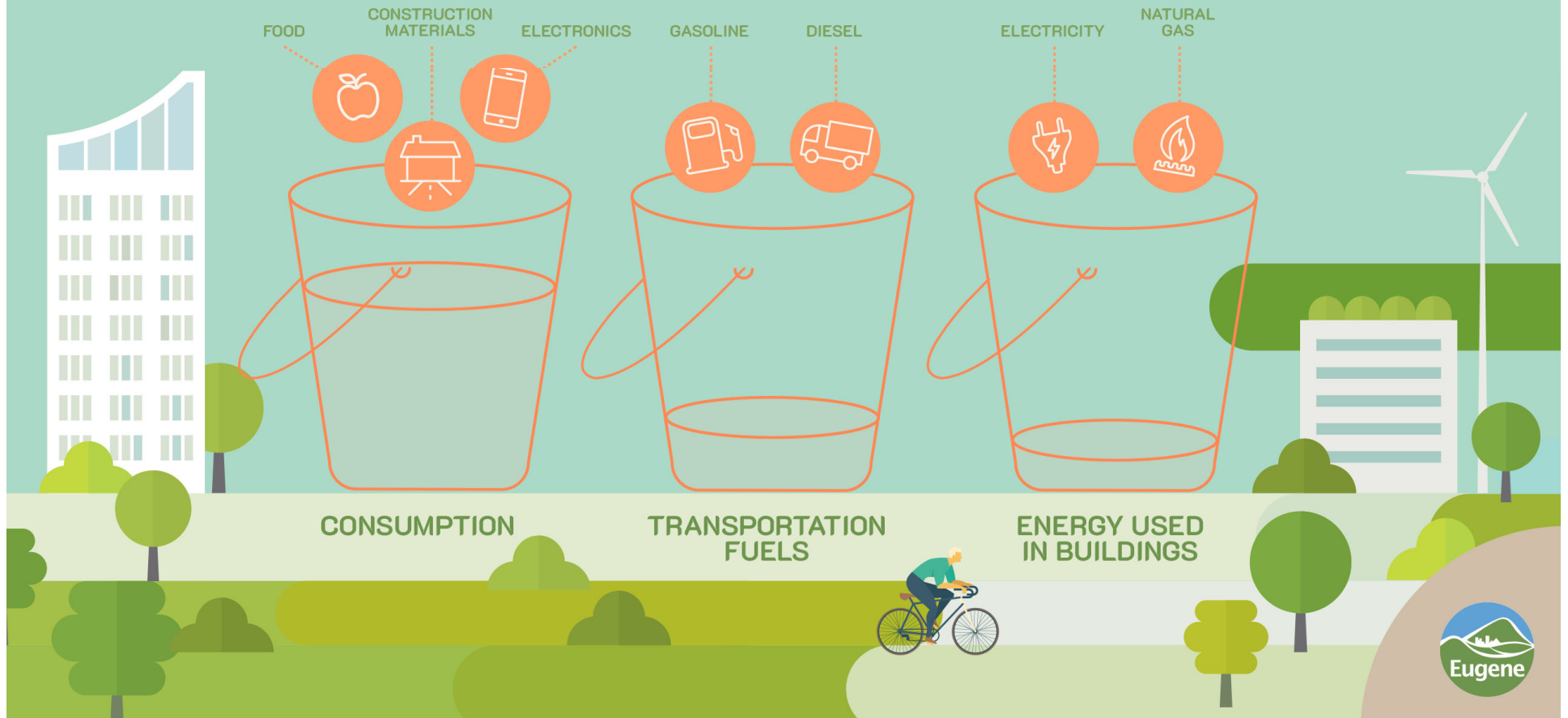


# CAP2.0 Gap Strategies

# CAP2.0 Equation



# EUGENE'S GREENHOUSE GAS EMISSIONS



# Gap Strategies

## – Transportation

DESCRIPTION	SCALE (MTCO2E - ANNUALLY)
<b>Transportation Fuels</b>	
1. More aggressive TSP goals	30,000-70,000
2. Electrify passenger vehicles/light trucks/commercial fleets rapidly	
a. 25,000 beyond TSP	110,000
b. 50,000 beyond TSP	220,000
c. 75,000 beyond TSP	330,000





# Gap Strategies

## - Energy Used in Buildings

DESCRIPTION	SCALE (MTCO2E - ANNUALLY)
<b>Energy Used in Buildings</b>	
1. Electrify heating systems through regulation of natural gas	130,000
2. Additional natural gas actions	
a. Reduce carbon intensity of gas	80,000
b. Offset gas emissions (50-100%)	160,000-310,000
c. Regulate infrastructure	20,000-40,000
3. Home Energy Score Policy	20,000

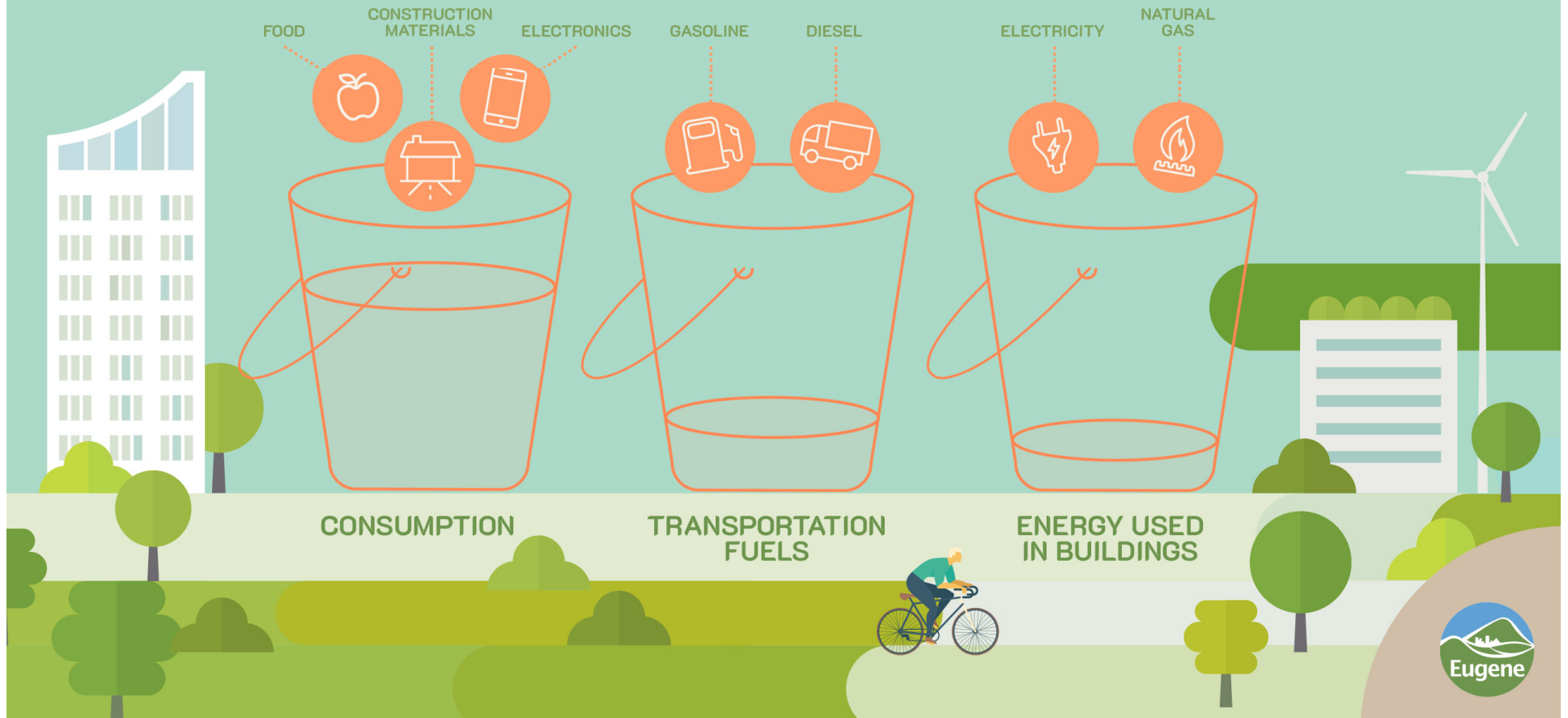


# Gap Strategies - Other Actions

DESCRIPTION	SCALE (MTCO2E - ANNUALLY)
<b>Other Actions</b>	
1. Reduce or offset refrigerant loss	80,000
2. Improve landfill gas capture	10,000-20,000



# EUGENE'S GREENHOUSE GAS EMISSIONS



# Consumption Based GAP



DESCRIPTION	SCALE (MTCO2E - ANNUALLY)
<b>Consumption</b>	
1. International action to implement Paris Accord at 25% by 2030	270,000
2. Reduce average square footage of new single-family detached homes	20,000
3. Move to plant based diets	10,000-170,000
4. Reduce all possible food waste	50,000
5. Eugene optimizes the waste system toward zero waste	90,000
6. Reduce carbon intensity of concrete products	

# It's going to take everyone to reach our goals.

- Phase Two of CAP2.0 is focused on Individual Action.
- Communications: Developing a Community Wide Campaign based on CAP2.0 research





# Questions and Discussion