



Climate Action Plan 2.0 Update

November 18, 2019



DISCLOSURE INSIGHT ACTION

A LIST

'A' is for Awesome Leadership

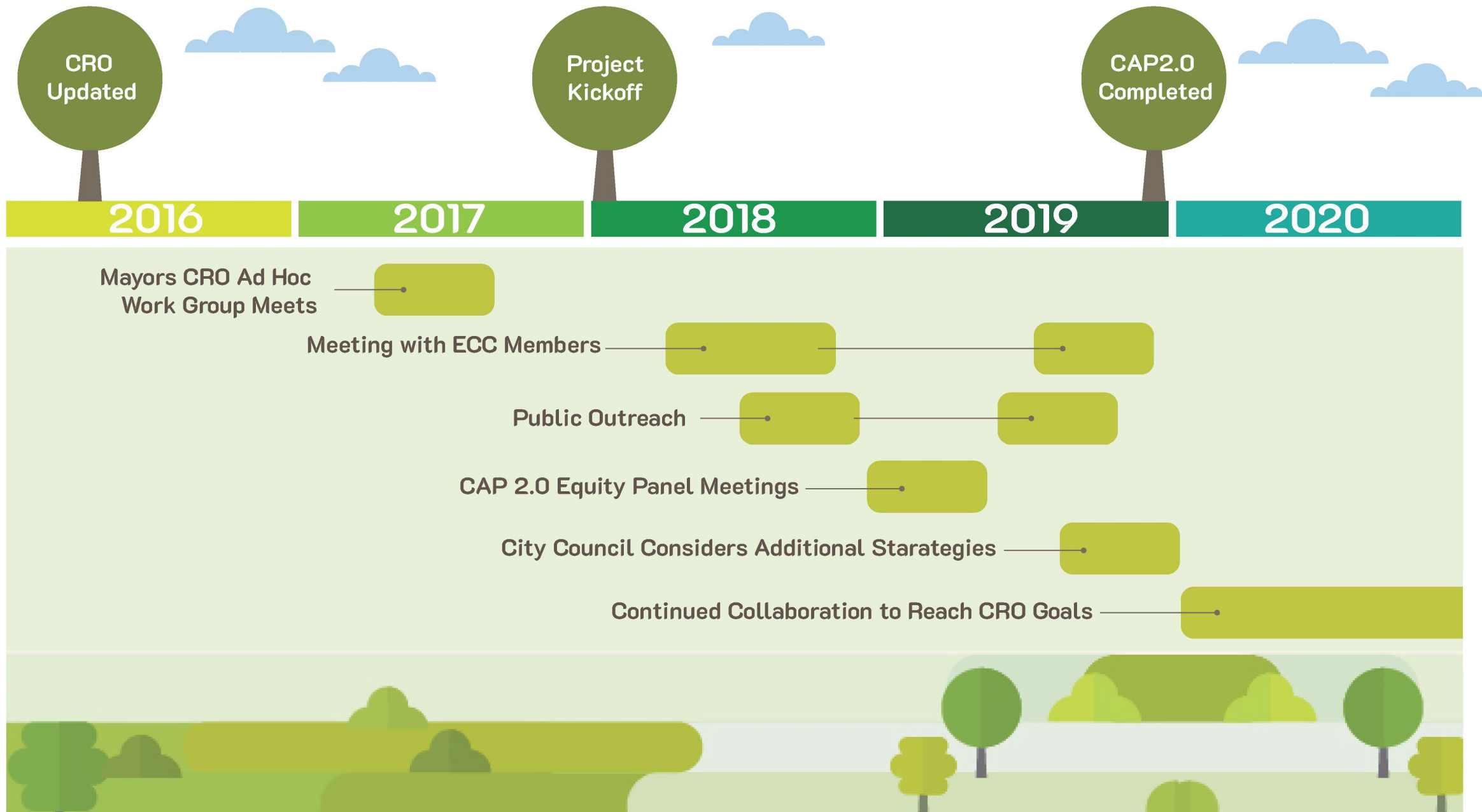
DRAFT

Eugene's Community Climate Action Plan 2.0:

Playbook for Eugene's Climate Journey

Fall 2019



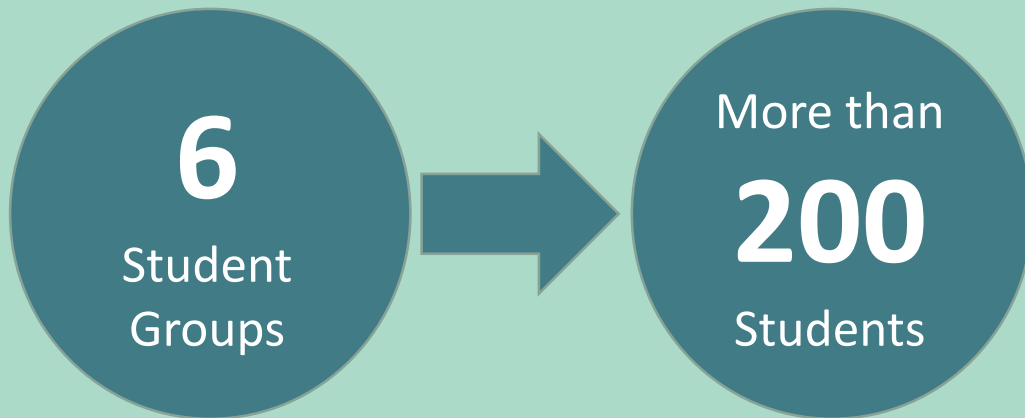
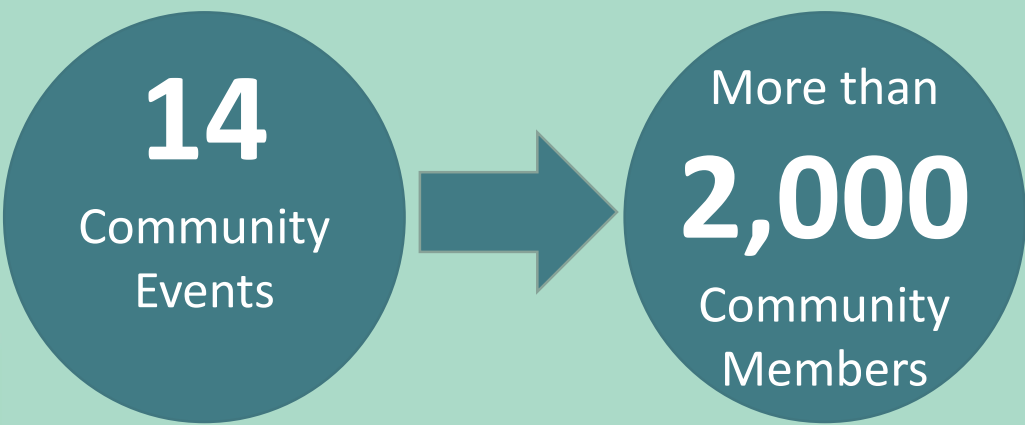


Thank You Eugene!

Mayor's CRO Ad Hoc
Work Group
Members

Mayor Lucy Vinis
Councilor Alan Zelenka
Councilor Greg Evans
Councilor Chris Pryor
Brittany Quick-Warner
Corina McWilliams
Howard Saxion
Ingrid Kessler
Jim Neu

Jon Kloor
Joshua Skov
Kristie Hammitt
Kurt Corey
Mark Schoening
Matt McRae
Matthew Schroettig
Rob Zako



Thank You Eugene!



Thank You
Eugene!

Equity Panel and
Eugene Climate
Collaborative

88
Actions



Data-Driven Process



DRY	WET	OTHER
<ul style="list-style-type: none"> Average summer increase of 10°F - 12°F by 2100 Wildfire surface area increasing by 400-500% by 2040 Reduced stream flow by 40-60% in summer due to reduced snowmelt by 2040 	<ul style="list-style-type: none"> Annual precipitation unchanged Snowpack in the Cascades nearly gone by 2040 Rain flows in streams in near real time 	<ul style="list-style-type: none"> Changes in disease patterns Population changes and climate migration Conversion of subalpine forest to other vegetation types by 2080

Figure 2: Sector-based (local) emissions and existing policy waterfall graph

Emissions produced locally each year are forecasted to reach 1.15 Million MTCO₂e by 2030 if the community continues its current trajectory.

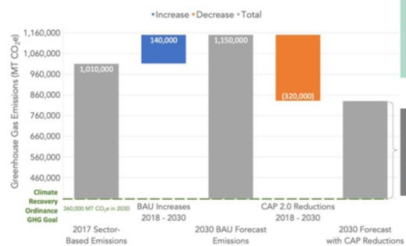


Figure 2 illustrates that ECC Partner actions will lead to local reductions of about 320,000 MTCO₂e.

After accounting for population growth and CAP reductions from existing policy -- there remains a "gap" of about 470,000 MT CO₂e to reach the CRO 2030 GHG Goal (green dashed line).

2030 Goal: 790,000 MT CO₂e



Building Our Community Capacity

EUGENE CLIMATE COLLABORATIVE

LARGE LEVER SHAREHOLDERS

By starting with the engagement of systems level actors, we are laying the foundation to make it easier for everyone – individuals, households, businesses, and other organizations – to take actions that support the CRO goals.



ECC partners are defined as organizations who have significant oversight and impact on community-wide fossil fuel use and greenhouse gas emissions or have the ability to affect or alter systems that will enable the community to adapt and prepare for climate change.

EUGENE CLIMATE ACTION PLAN

EQUITY PANEL





Resiliency – Let's Get Local



DRY

- Average summer increase of 10°F -12°F by 2100
- Wildfire surface area increasing by 400-500% by 2040
- Reduced stream flow by 40-60% in summer due to reduced snowmelt by 2040



WET

- Annual precipitation unchanged
- Snowpack in the Cascades nearly gone by 2040
- Rain flows in streams in near real time



OTHER

- Changes in disease patterns
- Population changes and climate migration
- Conversion of subalpine forest to other vegetation types by 2080



Community Action Highlights



Energy Used in Buildings

- B1 – EWEB has adopted emission reduction goals and serves load growth through conservation
- B2 – Northwest Natural Smart Energy Program
- B11 – LCC and UO Climate Action Plan updates calling for increased building efficiency
- B13 – Provide education about the climate impacts of having a large, single family home. Land use policies that encourage density and smaller multifamily homes result in lower emissions and should be encouraged



Transportation Fuels

- T1 - TSP, including investments in active transit and electric vehicle infrastructure
- T3 – Safe Routes to School program at Bethel and 4J School Districts
- T5 – PeaceHealth Rides bike share program
- T10 – LTC Moving Ahead and Transit Tomorrow projects
- T17 – Government subsidies and no-interest loans for electric bikes and electric vehicles, especially for low-income people and people with disabilities



Consumption

- C1 – Love Food Not Waste commercial and curbside food waste collection program
- C8 – Lane County Waste Management 63% diversion rate goal
- C12 – Stakeholders offer incentives for employees to attend workshops on waste management, composting, energy use, climate change, gardening, transportation, and carpooling



Resiliency

- R3 – EWEB providing emergency water stations at various schools and public spaces around the region
- R6 – MWMC partnership with EWEB in Pure Water Partners program
- Equity Concerns
 - Access to Electricity
 - Fire Health and Safety
 - Mental and Public Health
 - Communication
 - Transit



Additional Strategies

1. Smart Energy Program



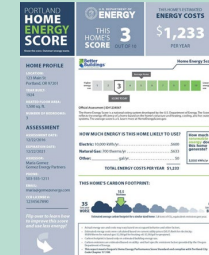
2. Regulate Natural Gas



3. Biogas and Renewable Hydrogen



4. Home Energy Score and Commercial Benchmarking



5. Energy Efficiency and Fuel Switching



6. TSP Updated to Meet CRO Goals



7. Implement Eugene's Electric Vehicle Strategy



8. Lobby for State and Federal Action



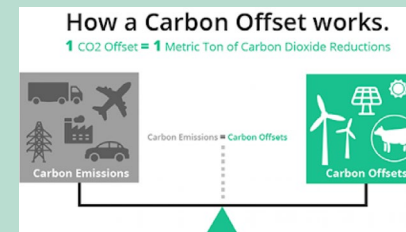
9. Reduce Refrigerant Loss



10. Capture Biogas From Organic Waste



11. Offset Program



12. Community Innovation Fund



1. Smart Energy Program



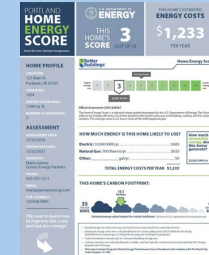
2. Regulate Natural Gas



3. Biogas and Renewable Hydrogen



4. Home Energy Score and Commercial Benchmarking



5. Energy Efficiency and Fuel Switching



6. TSP Updated to Meet CRO Goals



7. Implement Eugene's Electric Vehicle Strategy



8. Lobby for State and Federal Action



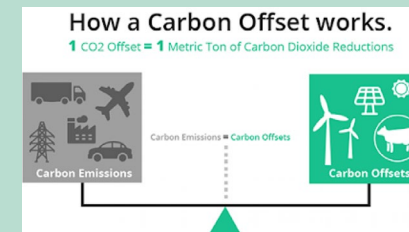
9. Reduce Refrigerant Loss



10. Capture Biogas From Organic Waste



11. Offset Program



12. Community Innovation Fund



Research

Policy Direction

Funding



1. Blue – NWN Process

1. Smart Energy Program



2. Salmon – Back Soon

2. Regulate Natural Gas



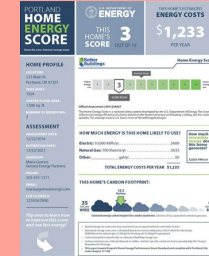
3. Green – Moving Forward

3. Biogas and Renewable Hydrogen



4. Yellow – Always An Option

4. Home Energy Score and Commercial Benchmarking



5. Energy Efficiency and Fuel Switching



6. TSP Updated to Meet CRO Goals



7. Implement Eugene's Electric Vehicle Strategy



8. Lobby for State and Federal Action



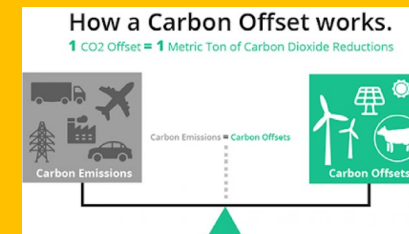
9. Reduce Refrigerant Loss



10. Capture Biogas From Organic Waste



11. Offset Program



12. Community Innovation Fund



Shifting Gears – Here's What's Next

- Northwest Natural Franchise Agreement and Climate Action
- 2020 Legislative Session
- Community Outreach, with a focus on how we can partner with marginalized communities
- ECC Outreach and Partnership– Let's keep the momentum going.
- Stage 2 of the CAP2.0 Process – A focus on individual, household, and neighborhood action
- CAP2.0 Additional Strategies
- Reporting – Update the City and Community Inventories; Create a Dashboard to track key metrics



What's Next for the CAP2.0

- November 24 – Community outreach at the Fix-It Fair.
- December 9-16 – Focus Groups.
- Late December – Public Engagement Findings Report.
- January 15 – CAP2.0 Work Session