



Eugene City Council

101 W 10th Ave., Suite 203

Eugene, OR 97401

541-682-5010 • 541-682-5414 Fax

www.eugene-or.gov

EUGENE CITY COUNCIL AGENDA

June 16, 2021

12:00 p.m. CITY COUNCIL WORK SESSION

Due to Governor Kate Brown's Stay Home, Save Lives Executive Order to combat the spread of Covid-19, this meeting will be held remotely using virtual meeting technology. Information about online or other options for access and participation will be available at <https://www.eugene-or.gov/3360/Webcasts-and-Meeting-Materials>

**Meeting of June 16, 2021;
Her Honor Mayor Lucy Vinis Presiding**

Councilors

Jennifer Yeh, President

Mike Clark

Randy Groves

Emily Semple

Claire Syrett, Vice President

Greg Evans

Matt Keating

Alan Zelenka

12:00 p.m. CITY COUNCIL WORK SESSION

1. WORK SESSION: 2020 Census and Ward Population Update

2. WORK SESSION: NW Natural Update

For the hearing impaired, an interpreter can be provided with 48 hours' notice prior to the meeting. Spanish-language interpretation will also be provided with 48 hours' notice. To arrange for these services, contact the receptionist at 541-682-5010. City Council meetings are telecast live on Metro Television, Comcast channel 21, and rebroadcast later in the week.

El consejo de la Ciudad de Eugene agradece su interés en estos asuntos de la agenda. El lugar de la reunión tiene acceso para sillas de ruedas. Se puede proveer a un intérprete para las personas con discapacidad auditiva si avisa con 48 horas de anticipación. También se puede proveer interpretación para español si avisa con 48 horas de anticipación. Para reservar estos servicios llame al 541-682-5010. Las reuniones del consejo de la ciudad se transmiten en vivo por Metro Television, Canal 21 de Comcast y son retransmitidas durante la semana.

For more information, contact the Council Coordinator at 541-682-5010
or visit us online at www.eugene-or.gov.

EUGENE CITY COUNCIL AGENDA ITEM SUMMARY



Work Session: 2020 Census and Ward Population Update

Meeting Date: June 16, 2021
Department: Central Services
www.eugene-or.gov

Agenda Item Number: 1
Staff Contact: Jason Dedrick
Contact Telephone Number: 541-682-5033

ISSUE STATEMENT

Every 10 years, the Eugene City Council examines the population of City Council wards, based on the results from the U.S. Census. Data from the 2020 Census will be available in the coming months, and federal, state and local districts will all be addressing potential boundary adjustments to accommodate population changes. This work session provides Council the opportunity to review community feedback and staff analysis related to boundary criteria and potentially approve the criteria that staff will utilize to create ward boundary scenarios.

BACKGROUND

At the February 17, 2021 Work Session, Council requested additional information on several topics. Attachment A provides the staff response to these requests. Since February, data has been made available that allows staff to estimate the current populations of the Council wards (Attachment B). This preliminary information suggests that the changes needed to ward boundaries will be similar to those necessary in 2011, which were relatively straightforward. Based on this and other information, staff have prepared a tentative timeline for the project that shows potential completion by January 2022 (Attachment C).

While the necessary Census data will likely not be available until September, Council can approve the criteria that will guide how staff will create boundary scenarios. In alignment with Council's direction at the February 2021 work session, a survey was posted on the City's Engage Eugene platform in May 2021 that allowed community members to provide feedback on various criteria that could be utilized. Staff have considered these results and provided analysis and a recommendation (Attachment D). The raw survey results are summarized in Attachment E.

In 2011, the council adopted the following criteria to guide development of boundary options:

- A population range difference of 3 percent, plus or minus, among wards
- Work with 2010 U.S. Census data and do not assume potential growth
- Develop scenarios that consider geographic and neighborhood features and strive for relative compactness and contiguity without rigid adherence to these characteristics
- Provide demographic information with scenarios to support consideration of potential impacts

June 16, 2021, Work Session – Item 1

While not adopted as formal criteria, several councilors suggested that options should neither advantage or disadvantage incumbent elected officials (City Council, EWEB) and should strive for modest rather than wholesale change. Individual councilors asked that options also consider socioeconomic status (communities of interest) and try to avoid further splitting up neighborhood associations.

A map of the current ward boundaries is included in Attachment F.

Based on previous council discussion and the results of the community survey, staff recommends the following criteria or guidelines to create ward boundary scenarios:

- A population range difference of 3 percent, plus or minus, among wards
- Work with 2020 U.S. Census data and do not assume potential growth
- Pursue an incremental change approach
- Boundary options should be developed that neither advantage nor disadvantage incumbent elected officials
- Develop scenarios that consider geographic and neighborhood features and strive for relative compactness and contiguity without rigid adherence to these characteristics
- Provide demographic information with scenarios to support consideration of potential impacts

Assuming staff receive the necessary Census data in September 2021, staff would return to Council at a work session in October 2021 to present initial ward boundary scenarios based on these criteria.

PREVIOUS COUNCIL DIRECTION

This is the second work session regarding the 2020 U.S. Census data and ward boundaries.

[February 17, 2021 Work Session](#)

Council directed staff to return with additional information on several topics and with the results of the boundary criteria survey.

COUNCIL OPTIONS

1. Approve the proposed criteria as recommended by staff
2. Amend some of the criteria
3. Direct the City Manager to return at a future work session with revised criteria

CITY MANAGER RECOMMENDATION

The City Manager recommends option 1.

POSSIBLE MOTIONS

1. Move to approve the criteria as recommended by staff
2. Move to approve the criteria as recommended by staff with the following amendments: [insert changes]

ATTACHMENTS

- A. Staff Responses to City Council Questions from February 17, 2021 Work Session
- B. 2020 Estimated Ward Populations & 2011 Final Ward Populations
- C. Draft Project Timeline
- D. Ward Boundary Criteria Staff Analysis
- E. Ward Boundary Criteria Survey Results
- F. Current Ward Boundary Map

FOR MORE INFORMATION

Staff Contact: Jason Dedrick
Telephone: 541-682-5033
Staff E-Mail: jdedrick@eugene-or.gov

Staff Responses to City Council Questions from February 17, 2021 Work Session

1. What other data besides the Census could we potentially use?

Cities often look to Federal guidance for what data to utilize when considering changes to local boundaries. The guidance for analysis of Congressional districts is to use the “best available data.” Since district boundary processes are inherently dependent on determining the precise location at which individuals reside, the Census is widely considered to be the best available data. Other cities have grappled with how to address non-trivial populations of undocumented or unhoused individuals with little success. While staff could establish a count for the number of unhoused individuals in the community (using sources such as the Point in Time Count or Homeless by Name List), determining an address for unhoused individuals proves challenging as these individuals are inherently mobile.

2. Will we get non-block level data earlier that might be helpful?

The City has received non-block level (slightly higher level) data that was utilized to create current estimates of ward populations (see Attachment B). We have also received revised Census block boundaries, which are being incorporated into our database so that analysis of Census population data can begin as soon as the Census data is received.

3. How much time did Council take last time to consider options?

In 2011, staff began development of boundary options in early July and presented two boundary alternatives to City Council on July 25, just before the summer break. Council moved these alternatives forward to a Public Hearing on September 19 to gather community feedback. Over the next five weeks, Council selected one alternative, directed staff to make some small changes, held another Public Hearing and then approved the final boundaries on October 24.

Staff have utilized the 2011 timeline to estimate a revised timeline that is provided in Attachment C.

4. Can the City change the filing deadlines associated with the May 2022 Primary election?

City Code does not currently establish an opening date for the candidate filing period associated with elections. Thus, the City is bound by Oregon Revised Statute (ORS), which specifies that the candidate filing period must open 250 days prior to an election. Currently the State is not anticipating that this ORS will be amended due to delayed Census data. For the May 2022 Primary, this would mean opening the filing period on September 9, 2021. Given that Census data likely will not have even been received by the City at this time, at present, any changes to ward boundaries will occur after the opening of the candidate filing period.

The City does retain the ability to amend the Code to establish a delayed opening date for candidate filing related to the May 2022 Primary, which would then supersede the ORS. Possible options for the opening date could be December 1, 2020 or January 1, 2021. A possible timeline for this process would be as follows:

- June 30 – Public notice of ordinance language
- July 19 – Public Hearing

- July 26 – Council action
- July 30 – Ordinance signed
- August 30 – Ordinance effective

5. Could this project utilize the City's Equity Panel?

Staff will be actively considering equity as part of this process. For example, as boundary scenarios are created for Council review, each scenario will be accompanied by key demographic data (primarily race, ethnicity and age). Currently the Equity Panel has a full work plan with existing projects. However, staff are open to other suggestions on how equity and access can be considered as part of the project.

6. Could transportation links be considered as part of the boundary criteria?

The most common criteria utilized when considering ward boundary changes are natural, political or human-created features that might serve to divide or define certain areas of a community. These often include features such as rivers, lakes, prominent landforms, railroad tracks, highways, streets and school enrollment areas. Since roadways and railroads serve as transportation links, these would already be possible criteria. Other transportation links such as transit routes already follow major and minor roadways and would not appear to add new information. While it is possible that transit routes could be considered catchment areas (similar to elementary schools) that would define certain sub-areas of town, currently these areas do not appear to differ significantly from school catchment areas or areas defined by existing streets.

2020 Estimated Ward Populations & 2011 Final Ward Populations

Table 1 provides estimated 2020 population data for each of the Council wards. This is not formal US Census data and will be updated once that data has been received. The target population for each ward is established by dividing the estimated total population of Eugene (172,253) by 8 (the number of wards), to arrive at the ideal, or target population for each ward at the conclusion of this effort. The final column on the right reflects how far the current estimated population is from the target population, reflected as a percentage. This table clearly shows that the population of some wards has grown more than others over the last 10 years.

Table 2 provides the final ward population information at the conclusion of the ward boundary project in 2011.

Table 1 - 2020 Estimated Ward Populations

Eugene Council Ward	Estimated Total Population ¹	Target Population	% Difference from Target
Ward 1	22,682	21,532	5.3%
Ward 2	21,019	21,532	-2.4%
Ward 3	23,898	21,532	11.0%
Ward 4	21,638	21,532	0.5%
Ward 5	21,727	21,532	0.9%
Ward 6	20,596	21,532	-4.3%
Ward 7	20,610	21,532	-4.3%
Ward 8	20,083	21,532	-6.7%
Total	172,253	172,253	

¹ This analysis was conducted using data from the Redistricting Data Hub.

Table 2 - 2011 Final Ward Populations

Eugene Council Ward	Total Population ²	Target Population	% Difference from Target
Ward 1	19,411	19,528	-0.6%
Ward 2	19,661	19,528	+0.7%
Ward 3	19,658	19,528	+0.7%
Ward 4	19,215	19,528	-1.6%
Ward 5	19,562	19,528	+0.2%
Ward 6	19,413	19,528	-0.6%
Ward 7	19,640	19,528	+0.6%
Ward 8	19,662	19,528	+0.7%
Total	156,222	156,222	

² Data from final 2010 Census.

Draft Project Timeline

Time Frame (tentative)	Possible Steps and Decision Points
February 2021	City Council Work Session to share information, identify issues, and discuss general approach.
May-June, 2021	Provide information and obtain public input on boundary criteria. Council review and approval of ward boundary criteria.
September 2021*	Staff receive and review Census data and prepare ward boundary scenarios based on council-approved criteria.
October 2021	Council Work Session to present initial ward boundary scenarios. Council feedback to staff. Staff incorporate council feedback and obtain public input on scenarios.
November 2021	Staff review and refine options for ward boundaries based on council and public input.
December 2021	Council Work Session to present revised boundary options. Council direction on boundary revisions or new ward options. Provide information and schedule a public hearing on proposed boundary revisions.
January 2022	Prepare ordinance and map and adopt new ward boundaries

*For the May 2022 Primary, the candidate filing period opens on September 9, 2021.

Ward Boundary Criteria Staff Analysis

Overview

Several key criteria can potentially be utilized as guidance when creating new ward boundaries. These include:

- Population range
- Accounting for anticipated growth
- Incremental versus substantial changes
- Incumbent elected officials
- Geography and other neighborhood or ward features
- Demographics

Each section below provides an overview of the criteria, the relevant survey results received, staff analysis and a recommendation. Full survey results are provided in Attachment E.

Summary of Staff Recommendation

Staff are recommending that Council adopt the following criteria:

- *Population range* - a population range difference of three percent, plus or minus, among wards
- *Accounting for anticipated growth* - work with 2020 Census data and do not assume potential growth
- *Incremental versus substantial changes* – pursue an incremental change approach (as a starting point)
- *Incumbent elected officials* - boundary options should be developed that neither advantage nor disadvantage incumbent elected officials
- *Geography and other neighborhood or ward features* - develop scenarios that consider geographic and neighborhood features, and strive for relative compactness and contiguity, without rigid adherence to these characteristics
- *Demographics* - Provide demographic information with scenarios to support consideration of potential impacts

Population Range

Overview

Providing for wards of equivalent population is perhaps the most important consideration for equal representation but can limit flexibility when attempting to reconcile other criteria. The final results of ward boundary changes are intended to support fair representation, accountability and greater responsiveness from elected officials when wards or districts are closer in population size. Population range criteria is typically reflected as the percentage difference between the smallest and largest wards with the target population as the center point. The target population is established by dividing the total population of Eugene by eight (representing the eight wards). As an example, if after boundary adjustments the largest ward was 2.3% over the target population and the smallest ward was 0.7% under the target population, the total population range would be 3.0%.

Survey Results

A majority of survey respondents (54%) indicated a preference for a target population range of 5%, followed by 23% indicating a preference for a target population range of 3%.

Staff Analysis

While creating wards with perfectly equal population may be theoretically possible, it can be an extremely time-consuming effort, particularly when trying to incorporate other criteria. In addition, adjustments to ward boundaries are made at the block group level (the smallest dividable geographic unit of a ward) which further limits flexibility.

In 2011, Council directed staff to utilize a population range of +/- 3%. Staff made an effort to exceed this standard when possible, resulting in final populations that were less than 1% different from the target population for 7 of the 8 wards and a total difference of 2.3% between the smallest and largest wards.

Staff Recommendation

Staff recommends utilizing a population range difference of +/- 3%. This standard worked well in 2011 and provides a certain amount of flexibility to consider other criteria.

Accounting for Anticipated Growth

Overview

Census data is produced every ten years and is the interval that is used to consider ward boundary changes. Although wards ideally start the period with very similar populations, disproportionate loss or gain of population in different wards can begin to create differences over time in ward population. One potential tool to address this issue is to anticipate where growth will occur and intentionally “undersize” those wards to account for anticipated growth. If the correct assumptions are made, this would produce inequities initially, but more equal representation over time. If not attempting to account for growth, wards would begin with equal representation but may become less equitable over time.

Survey Results

A majority of survey respondents (82%) indicated that the process should not account for anticipated growth.

Staff Analysis

Population forecasting for Eugene has been notoriously difficult and predicting where growth will occur is nearly impossible given the complexities of land use patterns and market conditions. Even if growth could be forecasted, it does not account for other factors that may drive population shifts within Eugene between wards.

In 2011, Council directed staff to not account for anticipated growth given concerns about the ability correctly forecast if and where it would occur.

Staff Recommendation

Staff recommends not accounting for anticipated growth, which was the approach in 2011.

Incremental Versus Substantial Changes

Overview

When analyzing ward boundaries for adjustments, there are two general approaches that can be employed: adjusting current boundaries (incremental change) and starting from scratch (substantial change). Incremental change provides a certain amount of stability (for community members and elected officials) and presumes that the current boundaries are working well from the standpoint of equal representation, relative compactness and general alignment with important features and geography. The need for substantial changes could be in response to a sense that current ward boundaries are not working well or that incremental changes over the years have resulted in concerns that should be addressed.

Survey Results

A majority of survey respondents (59%) favored an incremental versus a substantial change approach.

Staff Analysis

Deciding to pursue substantial changes to ward boundaries is a significant step, one that may be appropriate if there is a significant lack of support by the community or elected officials for the existing ward boundaries. Pursuing substantial changes is likely to greatly expand the timeline for the project as there may be additional criteria that would be necessary for staff to have prior to creating options and a need for much more significant community engagement. Under an incremental change approach (such as in 2011), when preparing draft scenarios, staff expects to bring a mix of options in order to satisfy other criteria – giving council a chance to weigh the merits of different approaches.

Staff Recommendation

Staff recommends an incremental change approach, which was utilized in 2011. This has worked well in the past and seems to have produced ward boundaries that continue to result in relatively intuitive wards that Council and the community support.

Incumbent Elected Officials

Overview

Consideration of where incumbent elected officials reside is often raised as a factor when considering adjustments to ward boundaries. Elected officials have developed relationships and connections to certain areas as part of their representation, and community members have developed relationships with their elected officials. Elected officials could be open to criticism if boundary criteria are too prescriptive about consideration of officials' residence location or criteria specify boundaries that keep elected officials in their current wards. It is worth noting that if an incumbent elected official no longer is in the same ward as part of a boundary adjustment, they are entitled to serve the remainder of their current term.

Survey Results

A majority of survey respondents (62%) favored not considering the current location of incumbent elected officials.

Staff Analysis

The residence of current elected officials in relation to ward boundaries is a politically difficult criteria and one with a fair degree of subjectivity in terms of how to *consider* these facts when creating

scenarios. While not adopted as formal criteria, in 2011 several councilors suggested that boundary options should neither advantage nor disadvantage incumbent elected officials.

Staff Recommendation

Staff recommends that the development of boundary options should neither advantage nor disadvantage incumbent elected officials. Taking this approach by not formally recommending boundary criteria that address the location of incumbents, suggests a “neutral” stance.

Geography and Other Neighborhood or Ward Features

Overview

Geographic boundaries can divide the population into different neighborhoods or communities, keeping a compact group of community members or voters together. However, following some geographic boundaries may fragment communities of interest or other groups of people. Certain geographic boundaries could yield wards that are less compact, and rigidly following geographic boundaries, or other features such as major streets, may leave less flexibility to accomplish other objectives.

A ward is generally considered “compact” if it has a fairly regular shape, with constituents all living relatively near to each other – though there can be disagreement about when a ward is compact. A “contiguous” ward is one where a person can travel from any point in the ward to another without crossing the ward boundary. Sometimes boundaries are not contiguous, perhaps as a product of annexations or other actions. Water also can stymie contiguity and can connect or divide an area. Other important considerations include Neighborhood Association boundaries and school attendance areas.

Survey Results

Survey respondents were asked to choose from a list of various criteria. Their top two criteria for consideration were to avoid further division of Neighborhood Associations into different wards and that geographic features (river, roads, etc.) should be utilized to guide boundary decisions.

Staff Analysis

There is a fair bit of subjectivity involved with attempting to determine the “features” of a neighborhood or ward. While Neighborhood Associations boundaries are known, community members can have differing perceptions of what constitutes their neighborhood or a whether a feature such as a river is a dividing or connecting feature. As mentioned above, terms such as compactness and contiguity can be interpreted in different ways. Consideration of neighborhood and geographic features is a helpful, if not essential tool in creating boundary scenarios.

Staff Recommendation

Staff recommends criteria that would develop scenarios that consider geographic and neighborhood features and strive for relative compactness and contiguity without rigid adherence to these characteristics. This criteria was used in 2011 and served as helpful guidance for staff in considering boundary scenarios.

Demographics

Overview

A community of interest is a group of people concentrated in a geographic area who share similar interests and priorities – whether social, cultural, ethnic, economic, religious, or political.

One perspective is that it is best to keep communities of interest whole, so that this group can have a chance to have its own elected official looking out for its shared interests and so that individual officials feel particularly responsible to serve discrete communities. An alternative perspective is that it is best to spread out communities of interest, promoting greater diversity in ward demographics.

How the process of developing boundary scenarios accounts for race and ethnicity is an important consideration, as it is essential to avoid boundary scenarios that have the perception of discrimination of any one population by either grouping in one district/ward or dividing across multiple districts/wards in a way that may disenfranchise them. Staff will provide demographic information to accompany scenarios in order to identify potential implications to help inform deliberations.

Survey Results

Survey respondents were not asked a question about demographics.

Staff Analysis

As described above, there are differing perspectives on how demographic factors could be considered when developing boundary alternatives that make establishing specific criteria very challenging. The more criteria that are developed (or the more prescriptive they become) the more difficult it becomes to balance criteria when developing alternatives. Rather than using demographics to inform boundary option creation it is also possible for Council and the community to consider demographics when comparing different alternatives once they have been created.

Staff Recommendation

Staff recommends not adopting specific criteria related to demographics but rather providing demographic information with boundary scenarios to support Council and community consideration of potential impacts. This was the approach utilized in 2011.

Ward Boundary Criteria Survey

SURVEY RESPONSE REPORT

14 May 2019 - 06 June 2021

PROJECT NAME:

Census and Ward Boundary Survey

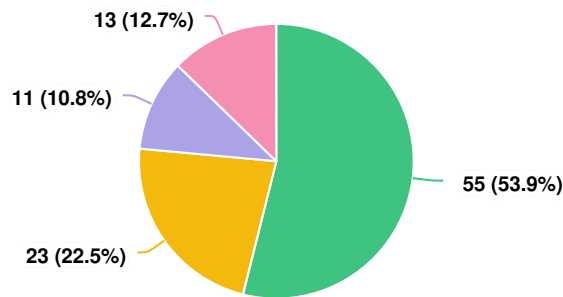




SURVEY QUESTIONS

Q1

The goal of this effort is to ensure wards have relatively equal populations. In general, the legal standard for “equal population” is a difference of less than 10 percent between the largest and smallest wards. Generally, achieving a smaller percentage takes more time and precision. Please select the standard you think should apply.



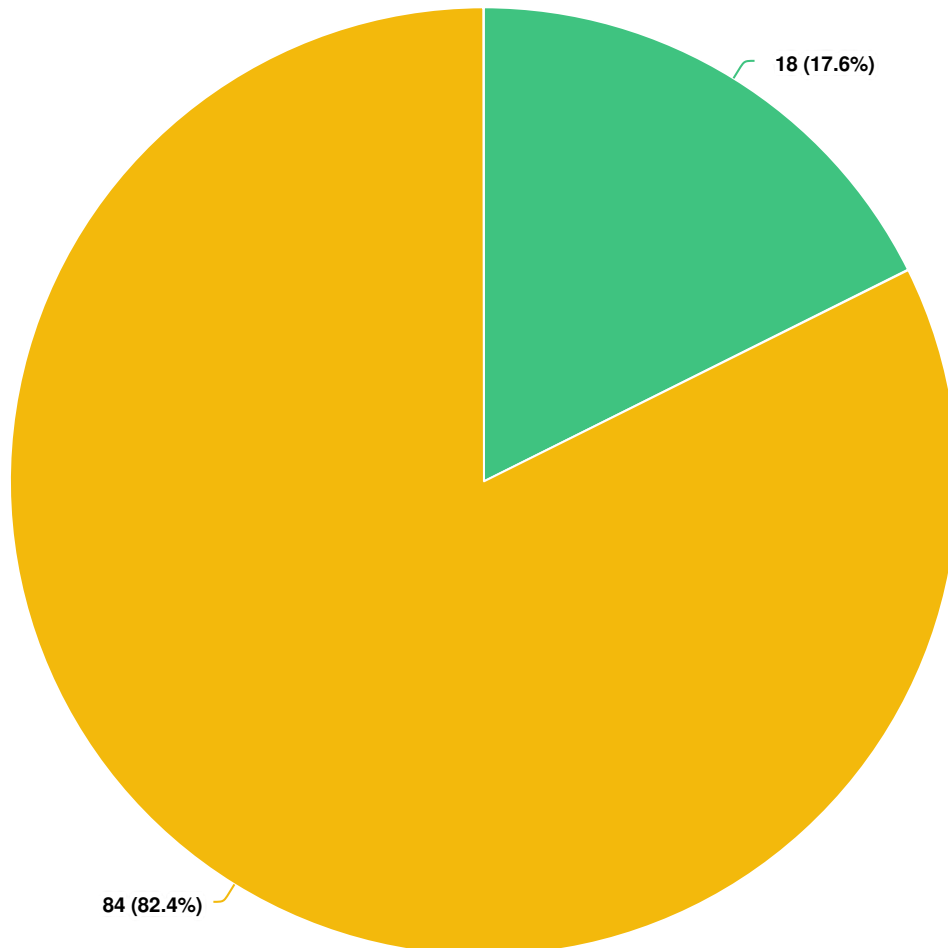
Question options

- ☒ Each ward should have about the same number of people within a range of +/- 5 percent
- ☐ Each ward should have about the same number of people within a range of +/- 3 percent
- ☐ Each ward should have about the same number of people within a range of +/- 1 percent
- ☐ Each ward should have about the same number of people within a range of (enter your preferred percent below)

Mandatory Question (102 response(s))

Question type: Radio Button Question

Q2 Please select the standard you think should apply.



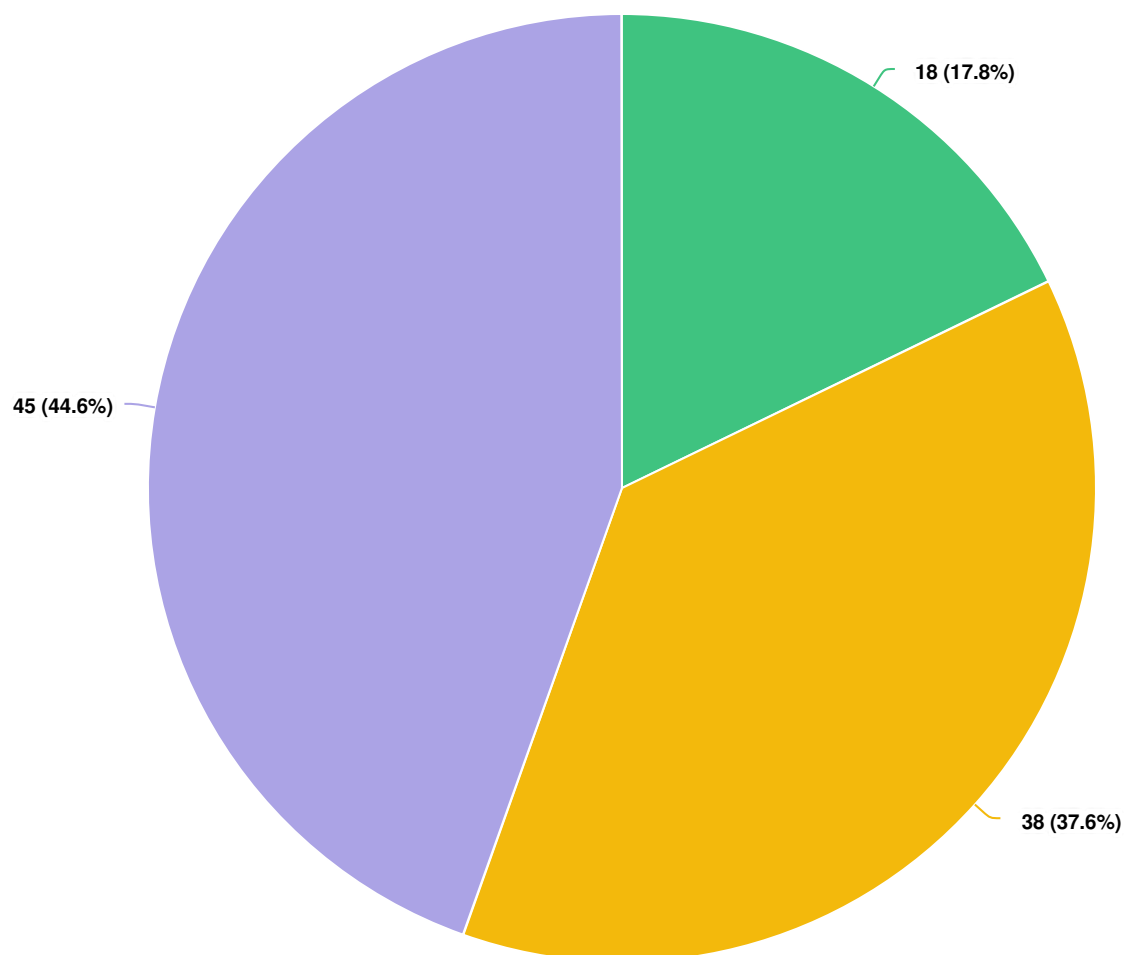
Question options

- Wards that are projected to grow faster should be drawn smaller to account for projected increases in the number of people living in them over the next 10 years. (This could create inequities now)
- The size of the wards should be determined by their current population, not by expected changes in the number of people living in them. (This could create inequities in the future)

Mandatory Question (102 response(s))

Question type: Radio Button Question

Q3 The City will not receive census data until late-September, five months later than usual. Decisions on new ward boundaries will likely occur early in 2022. This could have an impact on City Council and EWEB primary elections in May 2022. Normally candidates could file anytime between September and late February, with elections in May and possible runoff elections in November of 2022. There are several options for how to address this timeline issue. (Check only one)

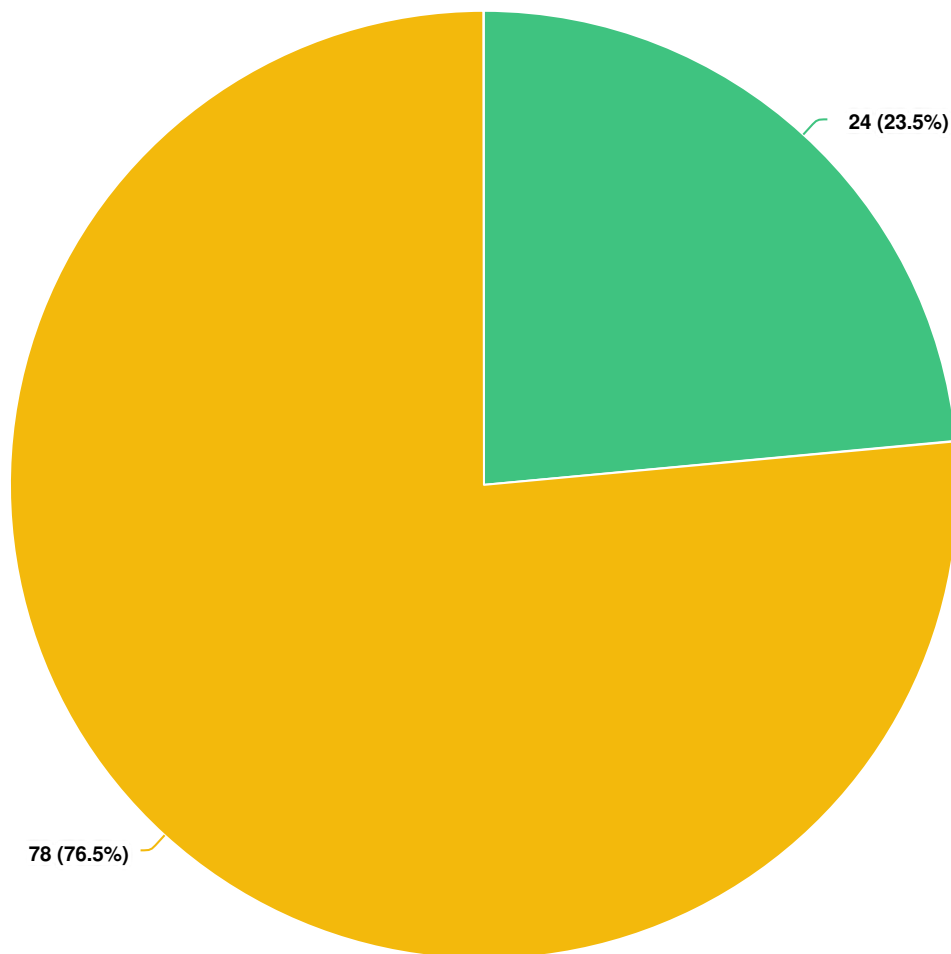


Question options

- Proceed with the effort, recognizing that a candidate may have their ward change during the filing period.
- Do not open the candidate filing period until ward boundaries are adjusted (if permitted by State statute).
- Postpone this effort until after the November 2022 election.

Optional question (101 response(s), 1 skipped)
Question type: Radio Button Question

Q4 If ward boundaries are being considered during the candidate filing period, the Council should consider where candidates who have completed their filing paperwork live when considering changes to ward boundaries.

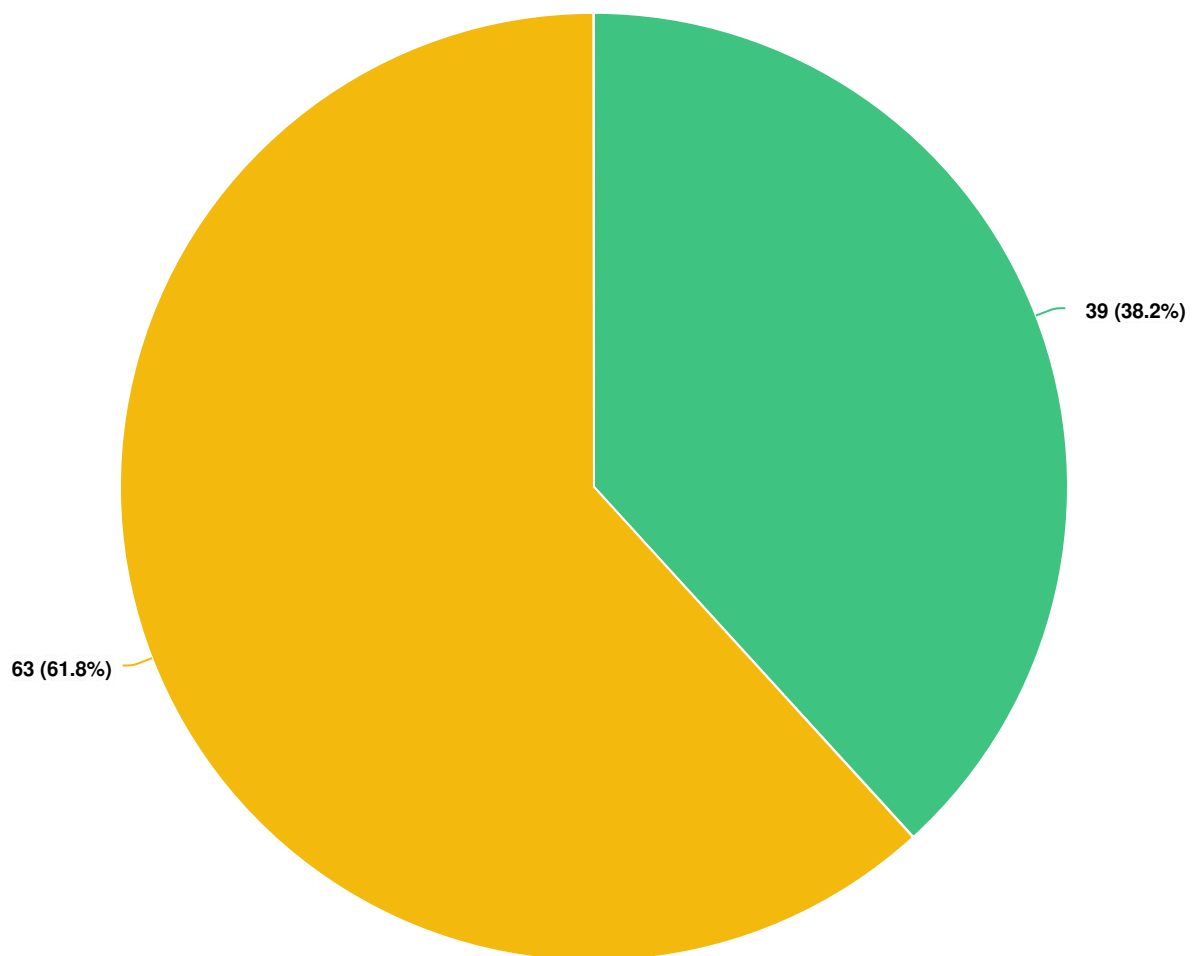


Question options

☒ Yes ☐ No

Mandatory Question (102 response(s))
Question type: Radio Button Question

Q5 The Council should consider where current elected officials live when considering changes to ward boundaries (if a current Councilor has their ward change as part of this process, they would still serve the remainder of their term, representing the ward their were originally elected from).

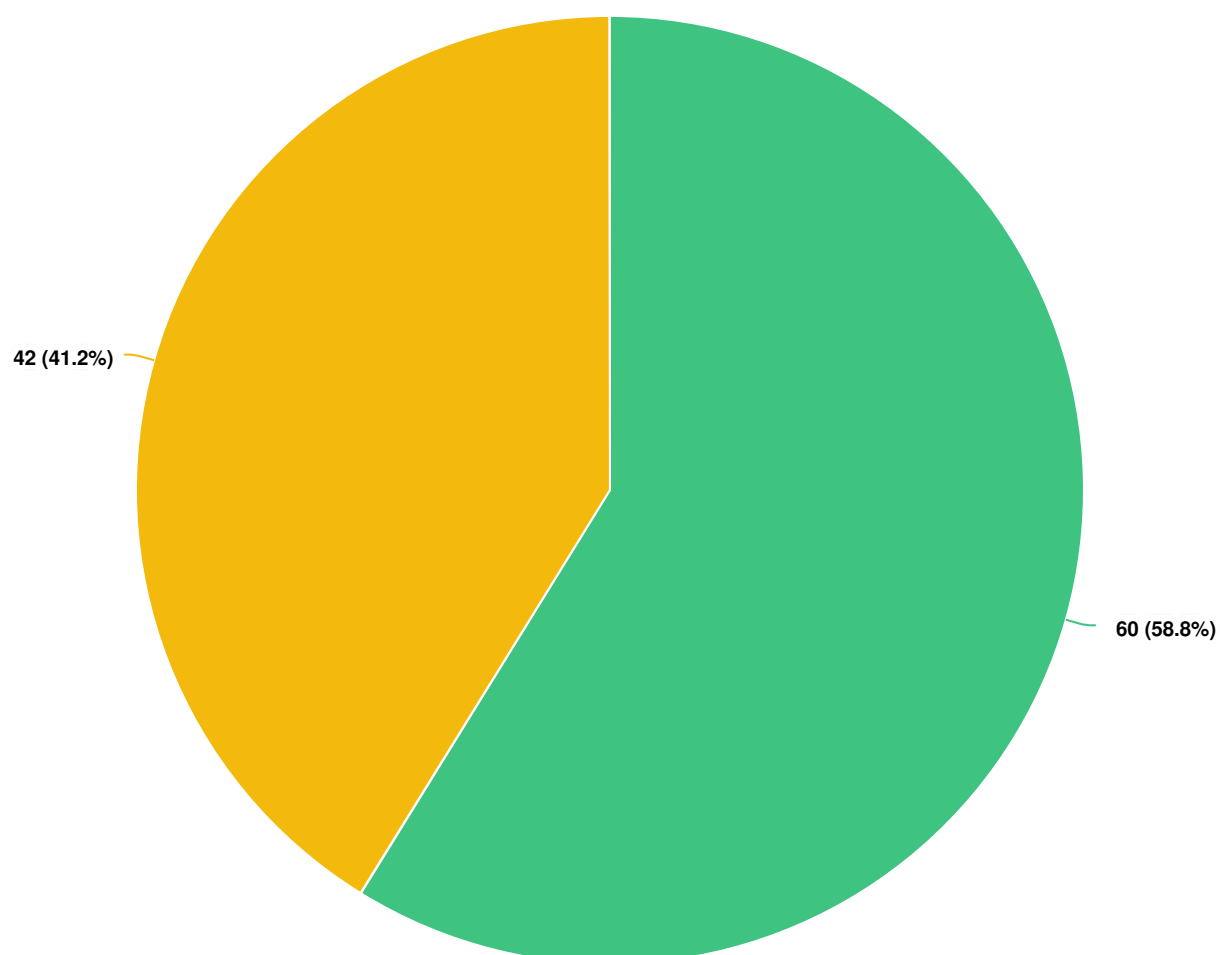


Question options

● Yes ● No

Mandatory Question (102 response(s))
Question type: Radio Button Question

Q6 Please select the standard you think should apply.

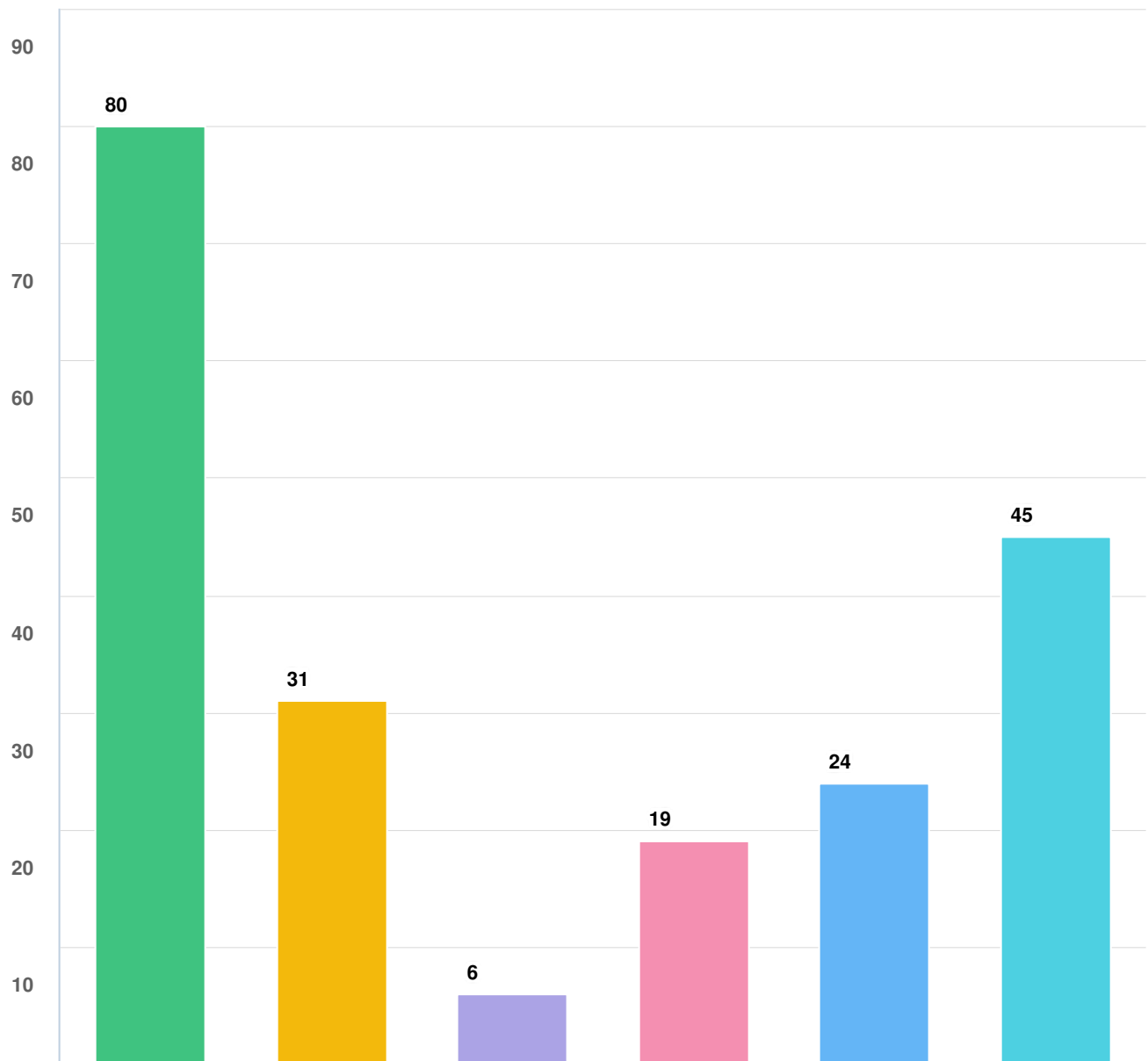


Question options

- Ward boundaries should change as little as possible.
- The Council should be willing to "start from scratch" in redrawing ward boundaries.

Mandatory Question (102 response(s))
Question type: Radio Button Question

Q7 Please select the standard you think should apply (check as many as apply).



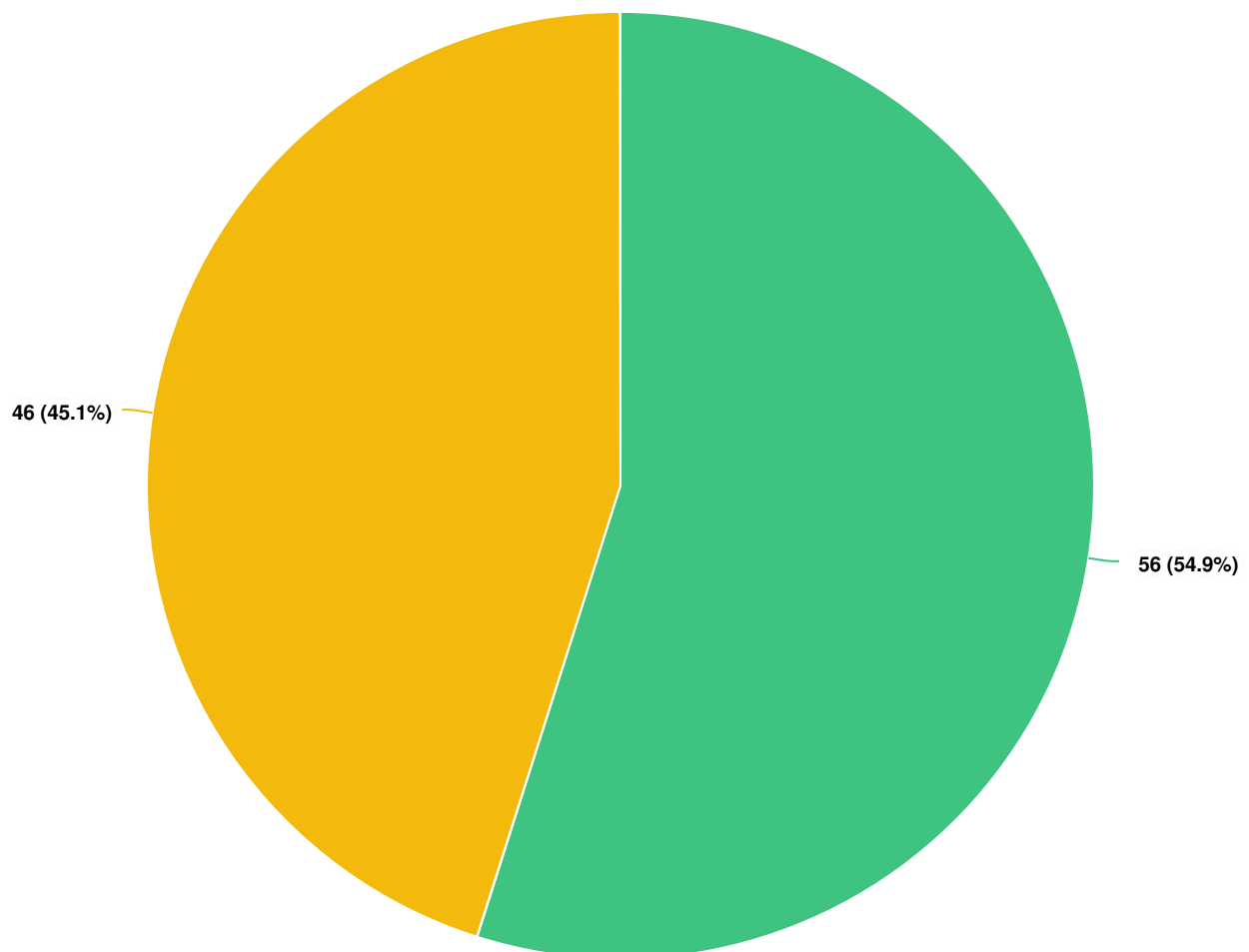
Question options

- As much as possible, recognized neighborhood associations should not be further divided into different wards.
- Ward boundaries should be drawn to include a diversity of interests and backgrounds within each ward, to the extent practical.
- Ward boundaries should be drawn to keep groups with potentially similar interests together (example, college students residing on both sides of the river).
- Wards should be as compact as possible.
- Neighborhood features like shopping centers, parks, recreation centers, school attendance areas and others should be used to guide ward boundaries.
- Geography and natural features like the river, railroad tracks, major roads or bridges, should be used to guide ward boundaries.

Mandatory Question (102 response(s))

Question type: Checkbox Question

Q8 Please select the criteria you think should apply.



Question options

- Geography and natural features may make more sense as dividing lines between wards.
- Geography and natural features may make more sense as transitions, with wards crossing them.

Mandatory Question (102 response(s))

Question type: Radio Button Question

Q9 Other ideas, suggestions or criteria to keep in mind when preparing draft scenarios for new ward boundaries?

- Pre-plan alternatives now based on expected/possible census data, so one or more options are ready to launch as determined by actual census data.
- Please do not engage in any gerrymandering. Wards should be set based off population with logical boundaries based on neighborhoods and geographic and physical boundaries.
- Make sure that people with similar interests are kept together, and that neighborhoods boundaries are respected.
- A non-geographic Ward to encompass our homeless citizens or others without a long-term/steady address so they can also have representation.
- Current political climate of concerns over redistricting seems not a good time to engage in many significant changes not required, much less anything "from scratch." Without knowing much about this, seems 5% is too challenging if under 10% is allowed.
- Please consider the transient/homeless population when drafting new wards. The impact of these camps should be considered as they are clearly no longer temporary.
- Another example of the phenomenally incompetent staff approach to engaging the public. Of the first order is to not expect informed opinions when no one knows what the census data will show. What moron came up with question #4 and #5? Take into account where a "point-in-time" of incumbents (who may not even be candidates in 2022) or candidates for just 4 of the council positions. Answer: Probably the same clueless person who didn't include the actual standard, i.e., 10%. So now will the report show that most citizens wanted a standard of less than 10%? Question #2 is almost as ridiculous. Isn't it clear that the 10-year cycle is the legislated time frame for adjusting boundaries. If there were a "lookahead," would it be to 2025, 2030 or 2040. Please treat my answer to #8 as "Neither you fools!" Do you even know what "geography" encompasses? Definition: "the study of the physical features of the earth and its atmosphere, and of human activity as it affects and is affected by these, including the distribution of populations and resources, land use, and industries." *** Eugene is doomed with such an extreme lack of professional competence, even when it comes to elections.***
- "Change" is the one constant in life; the process should move forward with the data in hand, knowing that those involved in proposed boundary adjustments can't see into the future other than recognizing obvious trends. It won't be perfect, but it will happen again after then next census and adjustments will happen again. Wards should be designed in the best way to represent the physical population, with the least number of edges per ward possible. I do think current approved land use should be taken into account, for example if a land development has been approved to be completed within 4-5 years or less then the expected average population of that new construction should help shape the boundaries. People don't like change, so expect a lot of pushback. But change can bring fresh perspectives. Good luck!
- Use this opportunity to link us more closely to the land. Use all watershed boundaries, and at sub-smallest-HUC use physical geographic boundaries (which may not necessarily coincide with a street). As I look at the current map, Santa Clara is bifurcated by River Road. This is an artificial boundary. The river is a wider, natural boundary. I believe their whole neighborhood should be served by the same councilor. Having two councilors makes it more difficult to keep them informed about their interests and needs. I am not familiar with other neighborhoods, but transit corridors should not divide a neighborhood. Both sides of a corridor have a lot in common .
- I only answered question 8 because it is required in order to submit responses.
- Base the wards on actual data. Do not attempt to be clever and guess where future population growth will occur. Make it facts based not a planners "guesstimate".
- Projecting future draft ward boundary scenarios based on Census information, that has NOT been looked at or analysed, is a mistake. I understand that there is a great deal of pressure, politically and economically to decide. Information, and where it comes from, is critical.
- Areas with newly developed residential housing should be split with surrounding areas with established housing so as not to have incomer inequality in council races

- Wards that are in more demand of needed assistance's with County, City, EPD, Fire Dept., funding, protections to bring safety to the community.
- Just keep it as simple as possible.
- N of first street from n Jefferson to Cross st to the river should be the Rose Garden ward. South of 1st street from N Jefferson to Blair all the way to 7th should be the whit. Anything East of Washington st (skinners garden to 7th should be market district ward. Abolish the whiteaker community council, they don't represent long term whiteaker residents, homeowners or business owners. This neighborhood has been taken over by the anarcho-commies. Please send help.
- Please keep the boundaries STRAIGHT! Zigzagging around (West University & Southeast NA should NOT zigzag around south of 13th)
- Multiplex apartments should be kept along major bus lines with commercial/restaurants on the bottom floor. Adding these types of structures in residential areas will decrease quality of life for those already established there.
- I think we also need to discuss neighborhood associations in this discussion, as well. I would like neighborhoods to be tied to the same counselor. Small neighborhoods like Amazon don't have enough people to make them run efficiently. How can we restructure our neighborhoods and wards based on geographic boundaries that will engender more balance in representation? There's a lot to consider!
- Neighborhood associations are well-developed and credible institutions for garnering citizen opinion. Strongly encourage Eugene City govt to consult them and listen carefully to their input.
- great care must be taken when considering infill in existing single family dwelling neighborhoods. we can attest to the problems that multi-unit dwellings can create when built next to (AND UP CLOSE) a single family dwelling. our situation has created ongoing difficulties (noise, drug use, over crowding, etc.) that we have experienced for over 30 years. it has irrevocably changed the mood of our neighborhood, and NOT for the better!
- Consider the historical information about where the boundaries should be, cause as little disturbance as possible when redrawing ward boundaries.
- #8 is a very weird, poorly worded, vague and government-y, question. Any responses to it (either odd choice) should be thrown out because no one answering has any clue what issue the question was intended to address.

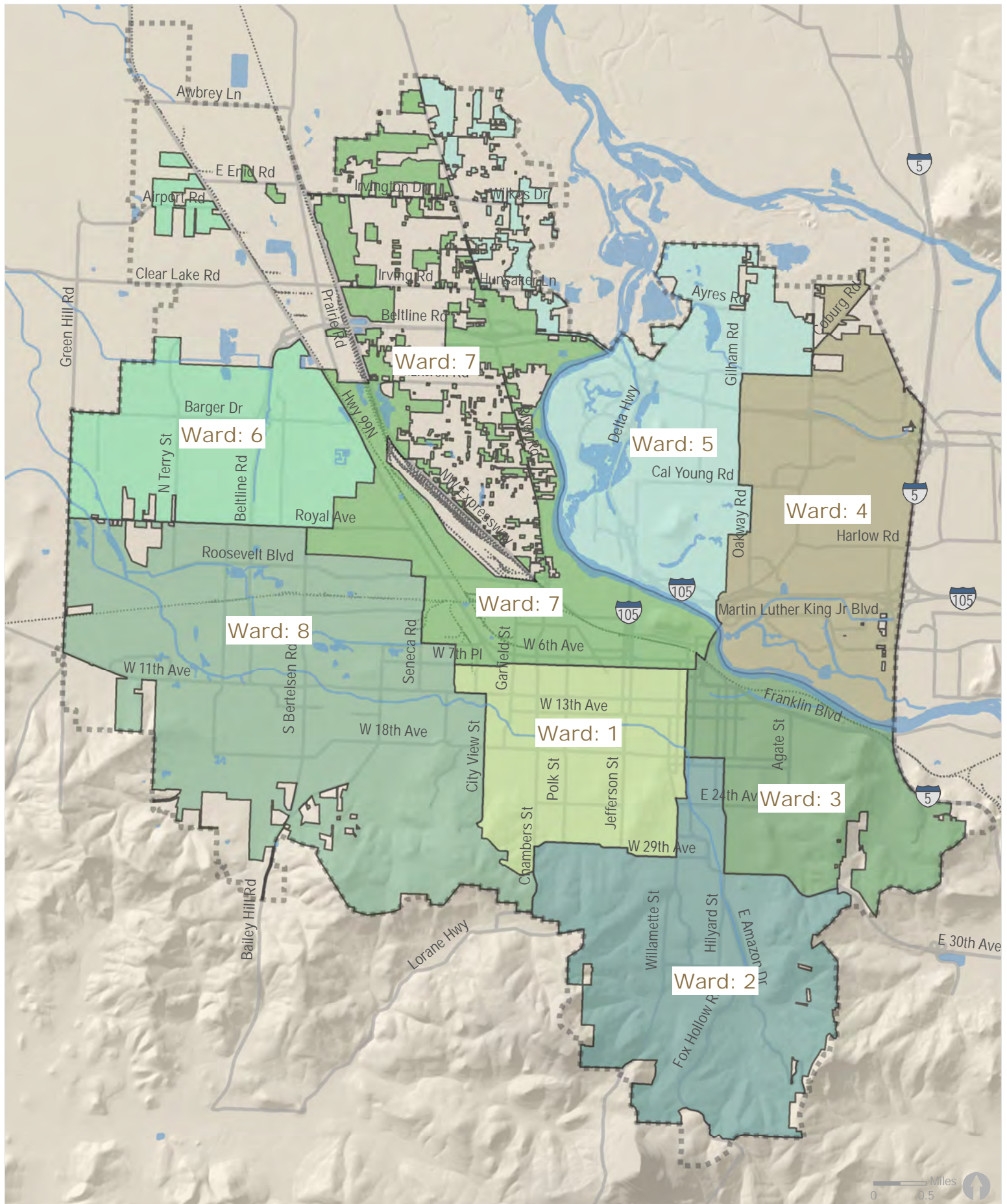
Optional question (26 response(s), 76 skipped)

Question type: Essay Question



Eugene City Council Wards

Attachment F



1/5/2021

- | | | |
|----------------------|----------------------|-----------------------|
| Eugene UGB | Ward 3: Alan Zelenka | Ward 6: Greg Evans |
| Ward 1: Emily Semple | Ward 4: Jennifer Yeh | Ward 7: Claire Syrett |
| Ward 2: Matt Keating | Ward 5: Mike Clark | Ward 8: Randy Groves |

EUGENE CITY COUNCIL AGENDA ITEM SUMMARY



Work Session: Northwest Natural Gas Update

Meeting Date: June 16, 2021
Department: Central Services
www.eugene-or.gov

Agenda Item Number: 2
Staff Contact: Sarah Medary
Contact Telephone Number: 541-682-5010

ISSUE STATEMENT

The City and Northwest Natural Gas (NWNG) have been in negotiations since 2019 on a new franchise agreement that would address the needs of NWNG and the City's climate action goals. Agreements were not reached prior to the franchise expiring on May 11, 2021, though conversations have continued. At this work session the City Manager will provide an update on discussions with NWNG and a framework and approach for achieving greenhouse gas reductions and a new franchise agreement.

BACKGROUND

During the City Council meeting on February 8, 2021, staff presented the most recent set of "deal points" for both a new franchise agreement and a carbon reduction agreement. While many of the deal points were tentatively agreed to, there was significant disagreement as to how the franchise and carbon reduction agreements would be implemented and tied together. Staff clarified to City Council that without an extension, the existing franchise would expire during negotiations. City Council did not choose to extend the franchise and it expired on May 11, 2021.

The City Manager will present details of an alternative framework for how the City and NWNG can work together on greenhouse gas reductions and a new franchise agreement. Central to that framework would be the utilization of a carbon reduction program established by the Oregon legislature in 2013 through Senate Bill 844, now codified as ORS 757.539. The 2013 legislation provides a voluntary emissions reduction program for Oregon's natural gas utilities (Northwest Natural Gas, Avista Utilities, and Cascade Natural Gas) to invest in projects that reduce greenhouse gas (GHG) emissions. Attachment A provides a high-level summary of this existing statutory program.

In order to proceed with drafting of an application for the emissions reduction program, City staff and NWNG need to start working together to develop the scope of the project. While NWNG will manage and administer the majority of that work, they have agreed to collaborate with City staff and give final approval to the City Manager prior to filing the application with the Oregon Public Utility Commission (PUC). Similar to earlier discussions about the Carbon Reduction Agreement (CRA), City Council can set targets for investments and emphasize areas of highest priority. The CRA had targets of 80% energy efficiency, 10% renewable projects and 10% carbon offsets. If

Council supports this approach to carbon reduction, it is anticipated the development of the application, that includes outreach and engagement with stakeholders, will take several months to complete.

With Council's support of the overall approach, a new franchise agreement could also be separately developed over the summer in preparation for a fall public hearing. More details about the franchise will be provided during the work session.

PREVIOUS COUNCIL DIRECTION

[November 14, 2018, Work Session](#)

This work session provided the City Council with information regarding the review process for the right of way Franchise Agreement with NWNG and discussed options for including CAP2.0 in the negotiations.

[January 30, 2019, Work Session](#)

Staff reviewed questions submitted by the Eugene Sustainability Commission to the City Council regarding the regulation of natural gas in Eugene.

[May 22, 2019, Work Session](#)

Council held a work session as a follow-up to the previous work session about NWNG's Franchise Agreement with the City and Climate Action Plan 2.0 discussions; NWNG presented its Deep Decarbonization presentation to Council.

[May 29, 2019, Work Session](#)

Council directed the City Manager to schedule a public hearing on a possible one-year extension of the Franchise Agreement with NWNG.

[July 22, 2019, Work Session](#)

Council adopted an Ordinance Extending the Term of Ordinance No. 20170 for six months until May 11, 2020.

[March 9, 2020 Public Hearing](#)

Public hearing followed by Council discussion on proposed Ordinance to extend the Franchise Agreement with NWNG another six months.

[April 8, 2020 Council Meeting](#)

City Council adopted the Ordinance extending the Franchise Agreement until November 11, 2020.

[July 29, 2020 Council Meeting](#)

City Council directed the City Manager to prepare an ordinance and schedule a public hearing in September 2020, to extend Northwest Natural Gas's Franchise Agreement for 6 months and to schedule a work session in early September 2020 for an update on the negotiations.

[September 9, 2020 Council Work Session](#)

Staff provided an update to City Council regarding the Franchise Agreement negotiations with

NWNG.

September 21, 2020 Franchise Extension Public Hearing

A public hearing was held on the six-month extension.

September 28, 2020 Franchise Extension Council Action

City Council voted to extend the existing Franchise for an additional six-month period, until May 11, 2021.

February 8, 2021

Staff provided an update to City Council regarding the Franchise Agreement negotiations with NWNG and highlighted that franchise would expire during negotiations.

COUNCIL OPTIONS

The City Council will receive an overview of the proposed framework and approach and have an opportunity to support, modify or decline the plan.

COUNCIL MOTIONS

If Council approves of the overall approach, the following motion could be used or modified during the work session:

Move to support the approach of working with NWNG on carbon reductions and a new franchise agreement and specifically:

- Authorize the City Manager to negotiate and approve the Northwest Natural Gas emissions reduction program application to the PUC, with emphasis on energy efficiency for lower income households.
- And direct City Manager to schedule a public hearing in the fall on a new franchise agreement as outlined in the work session.

ATTACHMENTS

- A. Senate Bill 844 Overview

FOR MORE INFORMATION

Staff Contact: Sarah Medary
Telephone: 541-682-5010
Staff E-Mail: smedary@eugene-or.gov

Senate Bill 844 - Voluntary Emissions Reduction Program Overview

Background

Senate Bill (SB) 844 established a voluntary emissions reduction program that permits Oregon natural gas utilities to invest in projects that reduce greenhouse gas emissions that they would not otherwise undertake in the normal course of business. SB 844 is codified at ORS 757.539, and the Oregon Public Utilities Commission (OPUC) has issued regulations to further implement it (OAR 860-085-0500 to OAR 860-085-0750).

Project Requirements

The emissions reduction projects must meet the following requirements:

1. Involve the provision of natural gas
2. Provide benefits to customers
3. Directly or indirectly reduce emissions
4. Not be projects that the natural gas utility would do in the ordinary course of business
5. Be reviewed with stakeholders prior to a natural gas utility filing an application at the OPUC
6. Not cause rates to increase beyond 4% of the utility's last approved retail revenue requirement.

OPUC Filing Requirements

Before investing in an emissions reduction project, a natural gas utility must file an application at the OPUC and obtain its approval. The application must describe how the project meets the requirements above, including why the emissions reduction approach is appropriate, timely, and merits approval. The utility must also describe how it will verify emissions reductions and how it proposes to recover the costs of the project.

OPUC Public Process

For projects less than \$1 million **and** have cost of carbon less than \$85/ton (Tier 1 projects), there is a 90-day public process where the OPUC will provide any interested parties an opportunity to comment, hold a public hearing to address comments, and issue a final order.

OPUC has considerable discretion and will weigh the emissions reductions the project is expected to produce relative to its costs. In these proceedings, OPUC Staff will offer comments or testimony along with other stakeholders. In such instances, OPUC Staff is not necessarily representing the views of the OPUC commissioners who will ultimately make the decision whether the project is in the public interest.